

# Starters for Fluorescent Lamps

## Product information

GE's environmentally friendly, premium quality glow switch starters are designed to reliably ignite fluorescent lamps coupled with conventional electromagnetic gears. These starters are also recommended for use with GE T8 LongLast™ lamps due to their improved durability, ensuring safe operation over an extended period.

## Features

- Lead free glass component
- Radioactive free design
- Outstanding reliability – up to 10,000 switches
- Flame-retardant plastic canister for safety
- Reliable operation in a wide ambient temperature range
- ENEC-certified



## Product range

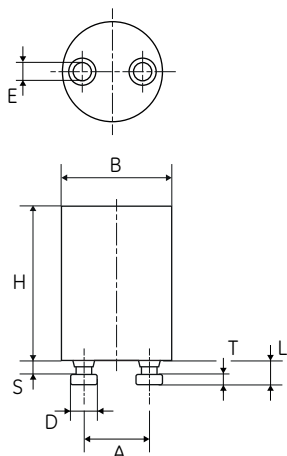
Fluorescent Lamp Wattages														Product Designation	Product Code
4/6/8W	10/13W	15/16W	18/20W	22W	30/32W	38W	36/40W	58/65/80W	70W	75W	85W	100/115W	125/140W		
<b>Single operation on 220-240V</b>															
✓	✓	✓	✓	✓	✓	✓	✓	✓						155/500	36536
									✓	✓	✓	✓	✓	155/800	37864
									✓	✓	✓	✓		155/801	37975
<b>Series operation on 220-240V/Single operation on 110-120V</b>															
✓		✓	✓	✓										155/200	36711

Packed in 25/250 boxes, but also available in bulk pack.

## Basic data

GE Code	155/200	155/500	155/800	155/801
Operating Frequency [Hz]	50	50	50	50
Input Voltage – Single [V]	110-120	220-240	220-240	220-240
Input Voltage – Series [V]	220-240	-	-	-
Peak Voltage (New Starters – Stored in Dark) [V]	Min. 800	Min. 900	Min. 900	Min. 900
Non-Reclosure Voltage (New Starters – Stored in Dark) [V]	Max. 70	Max. 140	Max. 180	Max. 170
Starting Ambient Temperature Range [°C]	-15 to +60	-15 to +60	-15 to +60	-15 to +60
Endurance Performance – Switching	10,000	10,000	6,000	6,000
Contact Pins Material	Brass	Brass	Brass	Brass
Cannister	UV and Heat Resistant	UV and Heat Resistant	UV and Heat Resistant	UV and Heat Resistant
Safety	Comply with IEC	Comply with IEC	Comply with IEC	Comply with IEC
RoHS Compliance	Yes	Yes	Yes	Yes
Radioactive Material Content	0 Bq	0 Bq	0 Bq	0 Bq

## Dimensions



	Min. [mm]	Max. [mm]
A	12.5	12.9
B	-	21.5
D	4.7	5.0
E	2.8	3.2
H	33.0	36.0
L	-	4.3
S	1.7	-
T	1.9	2.2