



KE66.2

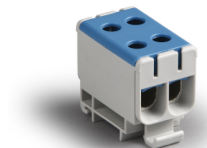
Name: **Clampo Pro terminal**
Tapping block, blue, Al 6-50 mm², Cu 2.5-50 mm²

Type: KE66.2

GTIN: 6418677191954

Description: Ensto Clampo Pro is a comprehensive universal terminal series for Al/Cu conductors of 2.5 – 240 mm².

Package:
Unit: PCS



Technical specification

Electrical values

Nominal insulation voltage 800 V
Pollution degree 3
Nominal current Cu 160 A, Al 145 A

Ratings

ETIM class Feed-through terminal block

Mechanical

Tightening torque 4 Nm (2.5-4mm²), 12 Nm (6-50mm²)

Dimensions

Weight 0.05 kg
Conductor cross-section Cu 2,5-50 Al 6-50

Temperatures

Operating temperature ≤ 80 °C

Features

Mounting DIN rail
Number of poles 1
Number of termination points 4
Screw head Hexagon
Screw head size 5 mm

Materials

Housing Polyamide

Colors

Color Blue

US specific

Conductor size 1/0-6
Maximum current Cu 150A, Al 120A



Saves Your Energy

PRODUCT CARD

2.1.2016

2/2

KE66.2

Maximum voltage 600 V
Tightening torque 90 Lb-In

Certificates

Standards EN 60947-7-1, EN 61238-1, UL 1059
UL category XCFR2
UL File no. E192532, E192532

Ensto Finland Oy

Ensio Miettisen katu 2
P.O.Box 77
06101 Porvoo, Finland

Tel. +358 204 76 21
Fax +358 204 76 2516

www.ensto.com